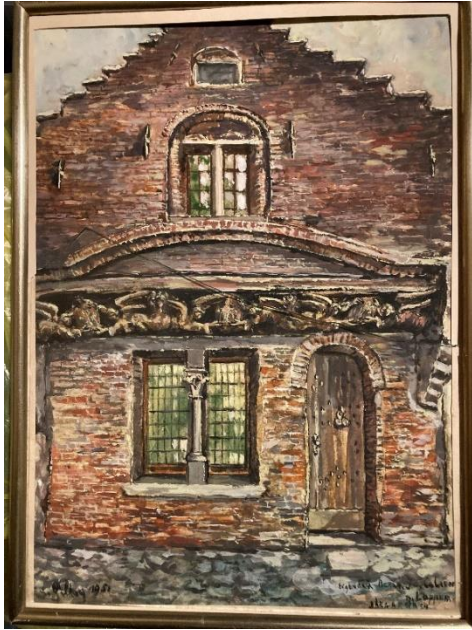


Beam of the Florentine nation house (inv. 00147)

- Author: Anonymous
- Place: Bruges
- Period: 1460-1470
- Material: Oak, traces of polychromy and gilded
- Measurements: +/- 33 x +/- 366 x +/- 11 cm
- Origin: Originating, given the coats of arms of Florence, from the nation house of the Florentines located at Academiestraat 1 (corner with Vlamingstraat) in Bruges. Since 1840 or around 1900 in the façade of Schaarstraat 54, a house owned by Jean van Caloen. In 1990, for protection against pollution and damage, transferred to Loppem Castle.
- Description: Beam elaborated in the form of a hollow frame containing three pairs of angels. The angel pairs are separated by schematically rendered clouds. Two by two and symmetrically, the angels bear three oval coats of arms with large lilies in low relief. This is the coat of arms of Florence (in silver an ornamental lily of throat).
- An image of the façade in Schaarstraat is kept in the Jean van Caloen Foundation collection. The work (inv. 001885), with an illegible signature on the left and dated 1951, bears in the right corner the inscription 'Eigendom Baron. J v. Caloen / te Loppem. / Shraarstr 54' (sic). On the back: 'La petite maison des "zes engelen" rue des Ciseaux à Bruges / rachetée par Savina de Gourcy à Pietje Brilleman pour l'empêcher / de la démolir et donnée à Ernest van Caloen, son fils, pour sa fête'.
- Exhibition:
- Bibliography: L. Devlieghe, *De huizen te Brugge*, Tielt, 1975, p. 323, ill.750





La petite maison des 300 Angelen, rue des Ciseaux à Bruges
realisée par l'air de George à Pierre Willemsen pour l'empêcher
de la démolir et donnée à Ernest van Caloen, son fils, pour sa fête.